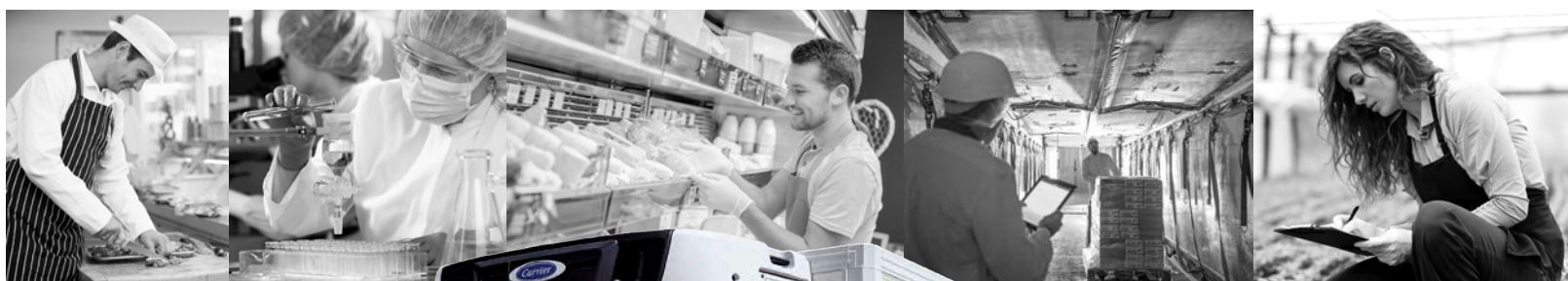


Single vehicles to entire fleets

A more flexible approach Temperature Controlled

18T Refrigerated Box - Chill & Frozen



A more flexible approach

18T Box Refrigerated Van - Chill & Frozen

Chassis Type: Euro 5 DAF CF65 250 4x2 Rigid
Euro 6 DAF LF55 220 4x2 Rigid

Body Type: Dual Compartment with Retractable Tail Lift

GVW: 18000kg

Est Payload +/-5%: Subject to Specification

Dimensions (mm)

Internal Length	8000-8400mm
Internal Width	2480mm
Internal Height	2500mm
Overall Length	TBC
Overall Width	2600mm
Overall Height	TBC
Wheelbase	TBC

Refrigerated Body

- Refrigerated Box built to ATP Class C Standard
- Rear Roller Shutter
- Near Side Pallet Width Side Door with Side Step
- Movable Interior Bulkhead
- Alloy Cab Cat Walk
- 2 x rows of 1806 Internal Load Lock set at 800mm & 1200mm from floor
- Interior Light Switch and Recessed Light Fitting
- 2 x Temperature Probe
- Gritted Anti Slip Floor & Drain hole
- Retractable Tail Lift, with hinged side, rear Loading ramps and Safety P Gates
- 14/16 Pallet Body Capacity

Options

- As Tronic Gearbox
- Bulkhead Door
- Extended Body
- Dhollandia 1500kg Column Tail Lift with 1050 aluminium platform, hinged side & rear loading ramps
- Barn Doors
- Telematics

Specification

Cab Interior

Sleeper Cab/Day Cab
Two Seats
Digital Tachograph
Electric Windows
Radio/CD
Night Heater

Chassis/Engine

Euro 6 LF55
Euro 5 CF65
220/250 bhp
Manual Gearbox
Air Suspension

Refrigeration

Diesel Fridge
Three Phase Standby
Twin Evaporators
Silent Fridge Upgrade
Transcan 2 Temp Recorder
-25°C to +10°C
Temperature Range



Website: flexerent.co.uk
Email: info@flexerent.co.uk
Phone: 0800 328 9001