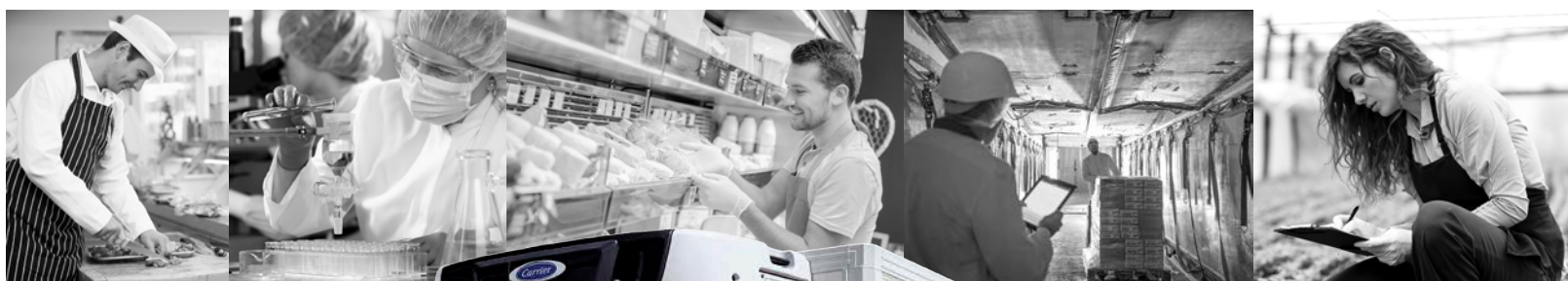


Single vehicles to entire fleets

# A more flexible approach Temperature Controlled

15T Refrigerated Box - Chill & Frozen



# A more flexible approach

## 15T Box Refrigerated Van - Chill & Frozen

Chassis Type: Euro 6 Daf LF55 220/210 4x2 Rigid  
 Body Type: Dual Compartment with Retractable Sliding Lift  
 GVW: 15000kg  
 Est Payload +/-5%: Subject to Specification

### Dimensions (mm)

Internal Length	7000-7400mm
Internal Width	2480mm
Internal Height	2500mm
Overall Length	TBC
Overall Width	2600mm
Overall Height	TBC
Wheelbase	TBC

## Refrigerated Body

- Refrigerated Box built to ATP Class C Standard
- Rear Roller Shutters
- Near Side Pallet Width Side Door with Side Step
- Movable Interior Bulkhead
- Alloy Cab Cat Walk
- 2 x rows of 1806 Internal Load Lock
- Interior Light Switch and Recessed Light Fitting
- 2 x Temperature Probe
- Gritted Anti Slip Floor & Drain hole
- Retractable Tail Lift, with hinged side, rear Loading ramps and Safety P Gates
- 12/14 Pallet Body Capacity

## Options

- As Tronic Gearbox
- Bulkhead Door
- Extended Body
- Column Tail lift
- Barn Doors
- Telematics

## Specification

### Cab Interior

Sleeper Cab/Day Cab  
 Two Seats  
 Digital Tachograph  
 Electric Windows  
 Radio/CD  
 Night Heater

### Chassis/Engine

Euro 6 LF55  
 220/210 bhp  
 Manual Gearbox  
 Air Suspension

### Refrigeration

Diesel Fridge  
 Three Phase Standby  
 Twin Evaporators  
 Silent Fridge Upgrade  
 Transcan 2 Temp Recorder  
 -25°C to +10°C  
 Temperature Range



Website: [flexerent.co.uk](http://flexerent.co.uk)  
 Email: [info@flexerent.co.uk](mailto:info@flexerent.co.uk)  
 Phone: 0800 328 9001